



TCEQ Goals for Oil & Gas Operations

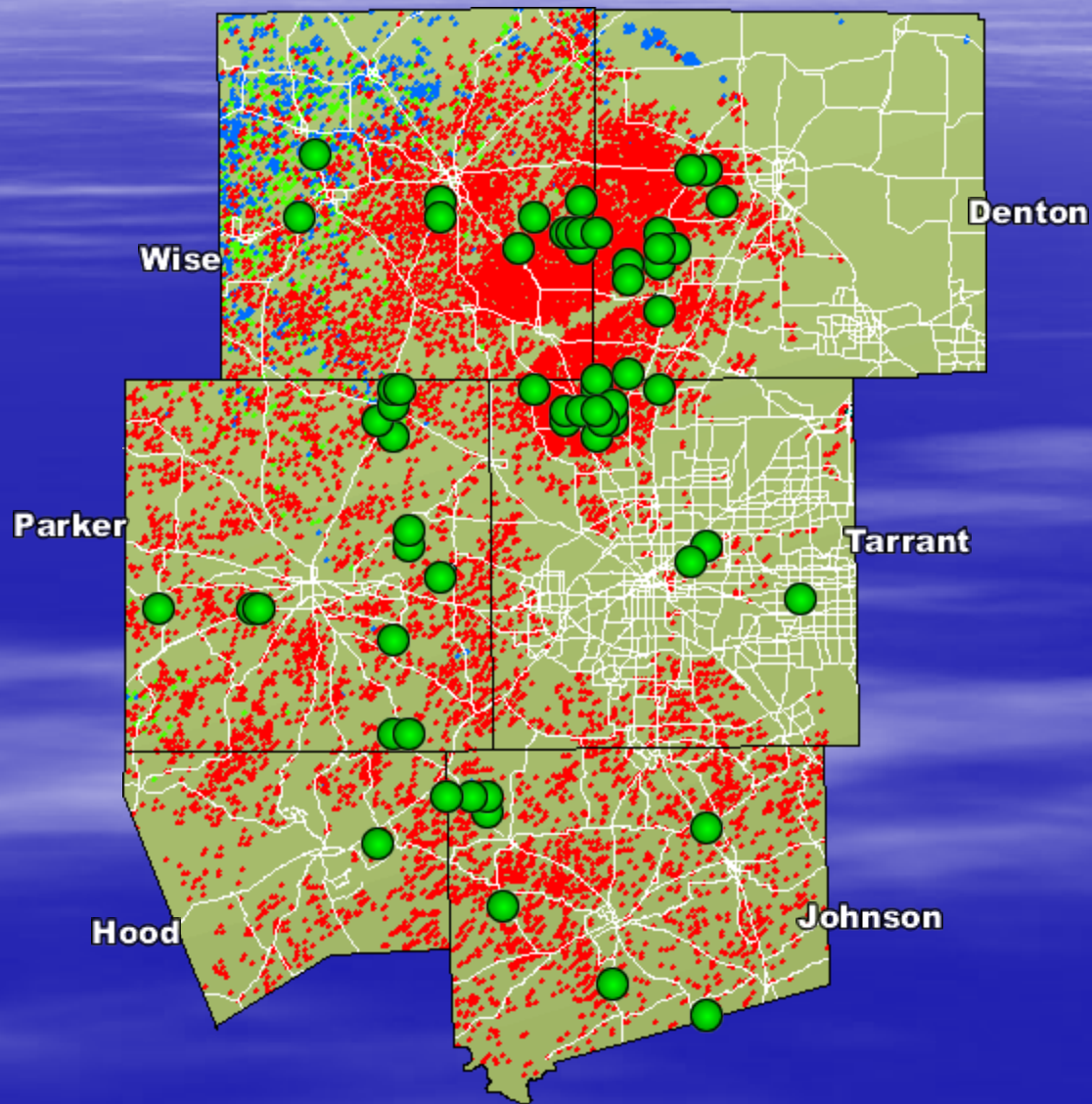
Tony Walker, REM

DFW Regional Director

Texas Commission on Environmental Quality



Barnett Shale Review



Barnett Shale Review

- Investigations began along the Gulf Coast in 2005
- Investigations began in the Dallas/Fort Worth area in 2007
 - Observations made using different platforms



Barnett Shale Review

- Mobile Monitoring trips
 - Follow-up investigations based on results of aerial survey: August 24-28, 2009, October 9-16, 2009 and November 9-14, 2009.
 - Used the IR camera to look for emission sources from natural gas operations: drilling rigs, wellheads, condensate tanks, compressor stations, saltwater disposal facilities, and processing facilities.
 - Collected air samples.





Barnett Shale Review

Barnett Shale formation emission sources associated with oil/gas production and processing includes:

well installation and rigs

well-heads

compressor stations

gathering facilities including tank batteries

salt-water disposal facilities

and processing/production facilities







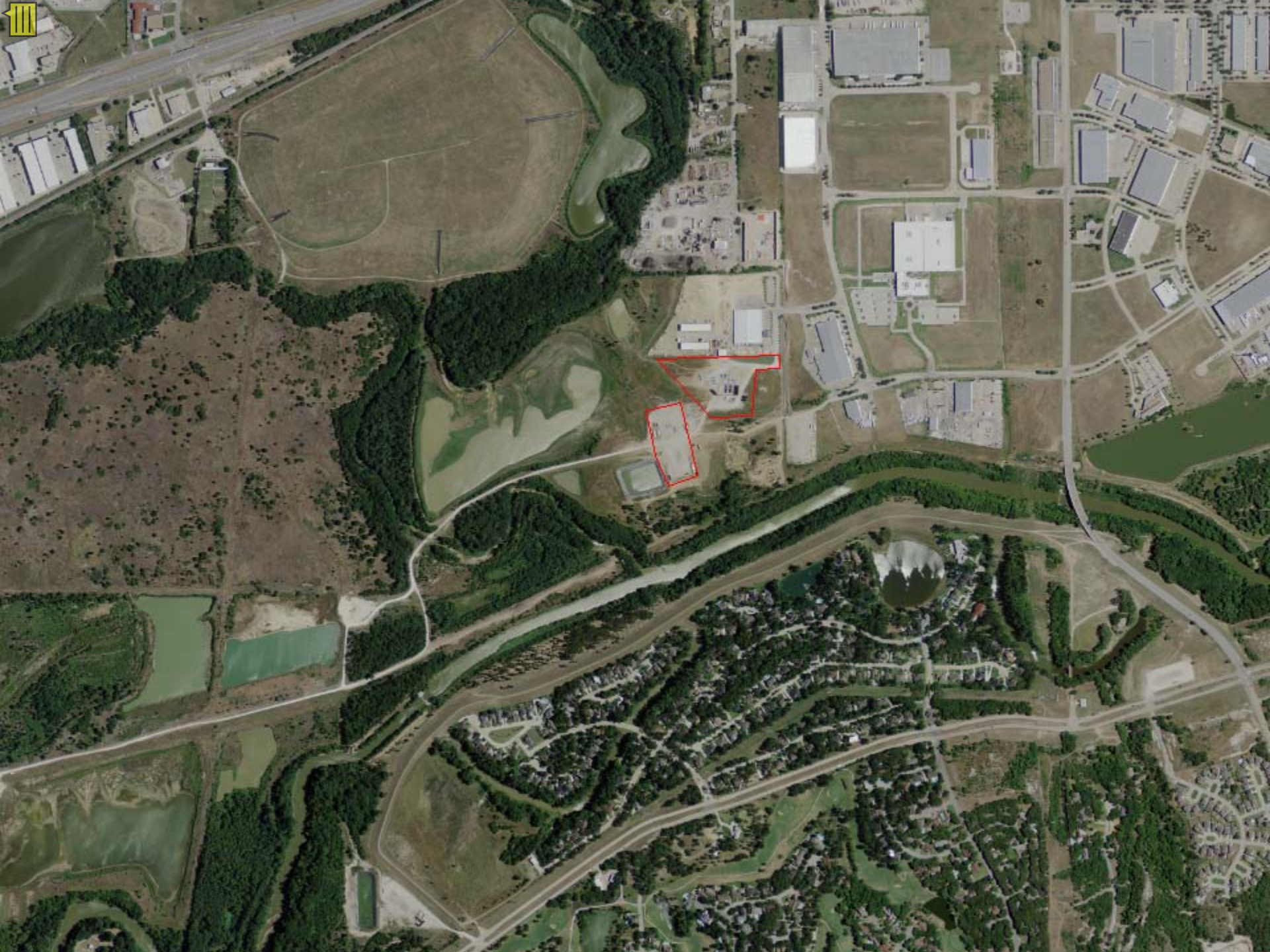


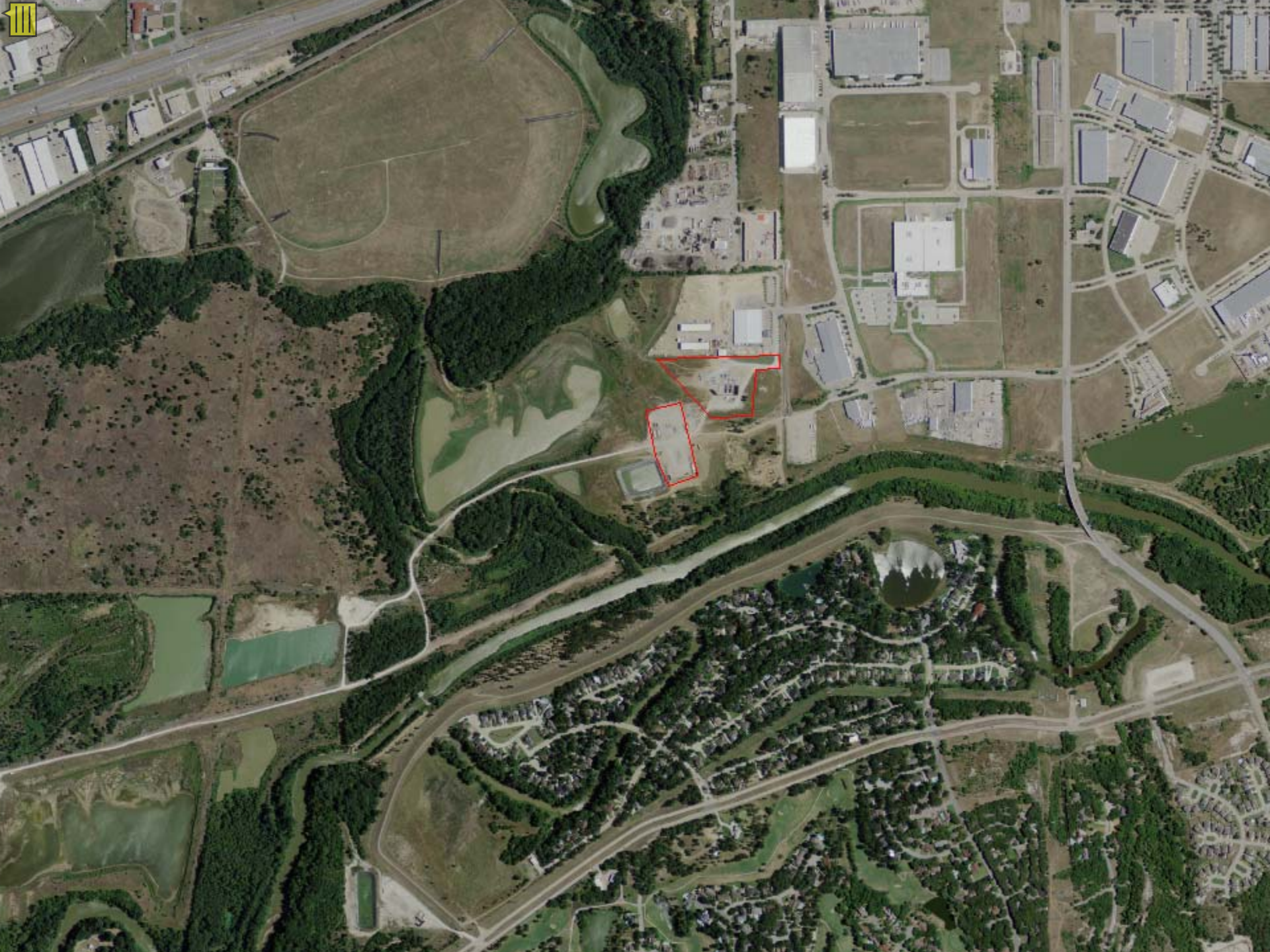




Ethane 580
Benzene 93
Toluene 120
m & p- Xylene 130

(compounds in ppbv)







Where Do We Go From Here?

- Long Term -

- **Additional monitoring trips to look at specific characteristics of emissions and off-site impacts.**
- **Proposed detailed air studies in the Barnett Shale area.**
- **Improvements in emission factors and emission calculation methodology**
- **Everything is on the table (rulemaking, permitting changes, enforcements)**



Where Do We Go From Here?

- Short Term -

- **Initiate aggressive “Find-it Fix-it” programs**
- **Identify and implement BMPs**
- **Universe identification**



Texas Commission on Environmental Quality

Thanks in advance for your participation.