



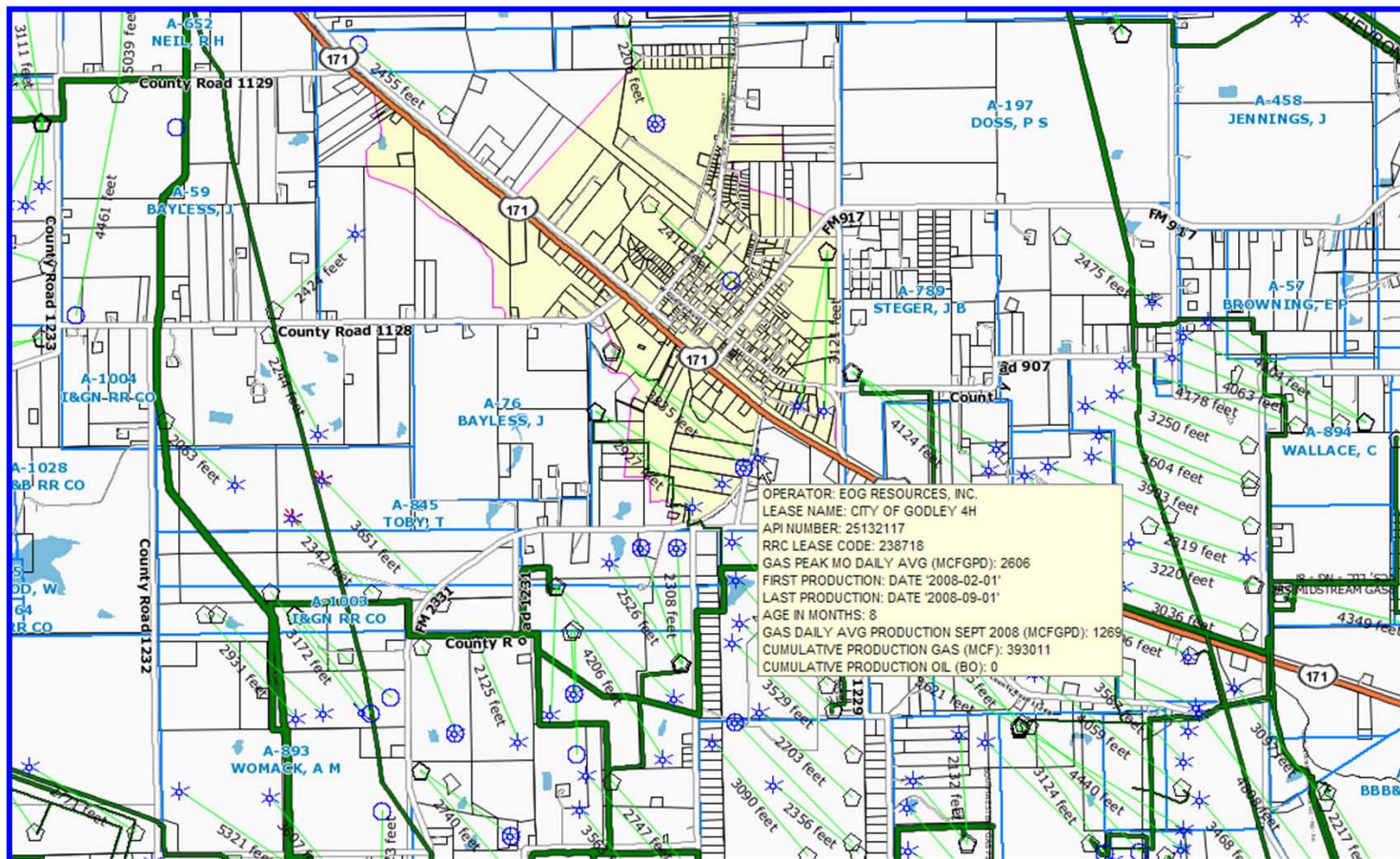
Powell Barnett Shale Newsletter

Barnett Shale in the Fort Worth Basin

Research and News

Since 2003

FEBRUARY 9, 2008



PBSN/OGI PowerMap of Barnett Shale Producers Near Godley Area of Johnson County (To Oct. 1, 2008)

Barnett Shale Well Producer Map Updated to Oct. 1, 2008



MICHAEL E. (GENE) POWELL, JR.
 PUBLISHER / EDITOR
 CELL: (817) 614-6979
mepowell@barnettshalenews.com

P. O. Box 470157
 FORT WORTH, TEXAS, 76147-0157
 OFFICE: (817) 924-1900
 FAX: (817)-231-0707

WILL BRACKETT
 MANAGING EDITOR
 DIRECT: (817) 886-9915
wrb@barnettshalenews.com

SUMMARY



The *Powell Barnett Shale Newsletter*® (PBSN) introduced the *Barnett Shale PowerMap*®, a joint venture of Shale Ventures, LLC, dba *Powell Barnett Shale Newsletter*®, Fort Worth, Texas and OGIInfo.com, LLC., Corpus Christi, Texas, on April 8, 2008. The purpose of this map is to provide specific information on wells that have produced in the twenty (21) county area of the Fort Worth Basin from the 18 Railroad Commission of Texas (RRC) designated fields for Barnett Shale production beginning in 1981. This current PowerMap has 'pop-up' well data on the Barnett Shale well producers to October 1, 2008. The well locations are from the RRC shape files to November, 2008.

The primary purpose of this map is to provide a quick look for well detail such as American Petroleum Institute (API) number, Lease Code number, operator, well name and number, etc. to research in the records of the Texas Railroad Commission for the official state numbers of record on a well. The well data is provided by research of the staff of the PBSN to October 1, 2008, and is shown as a 'pop-up' when the cursor is placed on the gas well symbol. An example of the 'pop-up' from a Johnson County well near Godley, Texas, at a scale of 1: 30000 is:

OPERATOR: EOG RESOURCES, INC.
LEASE NAME: RIVER HILLS 4H
API NUMBER: 25130390
GAS PEAK MO DAILY AVE (MCFGPD): 3806
FIRST PRODUCTION DATE '2005-07-01'
LAST PRODUCTION DATE '2008-09-01'
AGE IN MONTHS: 39
GAS DAILY AVE PRODUCTION SEPT 2008 (MCFGPD): 548
CUMULATIVE PRODUCTION GAS (MCF): 1187862
CUMULATIVE PRODUCTION OIL (BO): 0

- Current operator name
- Lease name and well number
- American Petroleum Institute (API) number
- Railroad Commission Lease Code assigned to the well. If -0- then well is in Pending file and no number has been assigned yet
- Peak month daily average production in MCFGPD (thousand cubic feet gas per day) which in the Barnett Shale formation of the Fort Worth Basin is an excellent measure of the well's future productivity
- First production date
- Last production date
- Age in months (last production month minus the first production month) necessary when comparing production data of wells
- Production from the most recent month in daily average in MCFGPD to compare with the peak month daily average and age so as to visually ascertain the well's decline
- Cumulative gas production in MCF


- Cumulative oil production in BO (barrels oil/condensate)

The length of the permitted lateral on horizontal wells is shown in feet as measured on the surface from wellhead to bottom hole location. These appear at 1: 30000 or closer. The direction of the laterals on horizontal wells show at 1: 50000 or closer. Permitted wells from the RRC shape files are current to November, 2008. Barnett Shale producers are shown with the gas well symbol  or with the symbol , if the well was still in the RRC Pending file and was not yet available online at the RRC website as of October 1, 2008.

The *Barnett Shale PowerMap*® is not designed to replace any other state agency's or data service company's current mapping. It is designed to provide management with a quick look at an area in the Barnett Shale to compare well information. Each person is then encouraged to research the records of the RRC on their excellent website for official current information.

We have adopted the use of showing the (API) number assigned to each well bore at the bottom hole location on producing wells now in use by the RRC. The old method of displaying the API at the surface location is no longer effective in mapping, as many horizontal wells are now drilled from the same pad and the data quickly becomes stacked and unreadable.

The *Barnett Shale PowerMap*® has many other attributes in addition to the general data bases discussed above. A person may add or subtract many 'layers' to the map by clicking the boxes on other attributes such as pipeline detail from the RRC records; abstract number and survey names; parcel or tract lines; city names; city limits; water bodies; parks; flood plains; wildlife refuges; and aerials.

There are several basic areas where the *Barnett Shale PowerMap*® may be researched through the *Query Map Features*. First click on the *Query Map Features* icon  and look to the right of the map where you will see *Query Map Features*.

The *Wells Group* production data is based on research of the staff of PBSN with production data shown from 1981 to the date shown for all 18 field designations of the RRC for Barnett Shale production including the Newark East (Barnett Shale) Field. This layer is named *PBSN Producers*. A search parameter which may be used is API number; lease name; well number; operator name; county; lease code; gas Sept 2008; oil Sept 2008; gas cum MCF; oil cum BO; age in months; gas peak month daily average MCFGPD; oil peak month daily average BOPD; first production month; last production month; latitude; or longitude. Once the number or name has been typed into the *Parameter value* field hit *Execute* then highlight the name or number under *Results*. Then click on *Zoom* at bottom after the map zooms to the area, click on *Select* and the area will be highlighted. If you click on information in a 'pop-up', it will also appear in a box in the lower left of the screen. This information may be highlighted and copied to your computer 'clipboard' and may be pasted into other documents such as MS Excel, MS Word, etc. Right click and choose *Clear Selection* to clear the highlighted area.

The *Abstracts Group* allows for searches by county layer. A search may be made by abstract number or survey name. Once the number or name has been typed into the *Parameter value* field hit *Execute* then highlight the name or number under *Results*. Then click on *Zoom* at bottom after

the map zooms to the area, click on *Select* and the area will be highlighted. Right click and choose *Clear Selection* to clear the highlighted area.

We are working on many other enhancements to this map. This map is not for research by geologists, engineers or other interested parties for specific current reports on wells in the Barnett Shale. There are excellent data service companies such as IHS Energy Group and Drillinginfo, Inc. for that data as well as the database filed and published by the RRC. This map is for executives and managers involved in the development of the Barnett Shale in the Fort Worth Basin and well owners for a quick look of general information on how wells compare in different areas in quantity and quality.

Only subscribers to the *Powell Barnett Shale Newsletter*[®] have access to the *Barnett Shale PowerMap*[®] effective February 9, 2009. Simply log in, click on the map and begin your search using the *Barnett Shale PowerMap*[®].

SEARCH INSTRUCTIONS

There are two basic groups where the *Barnett Shale PowerMap*[®] may be researched through the *Query Map Features*. First click on the *Query Map Features icon* and look to the right of the map where you will see *Query Map Features*'. The groups are:

- Wells Group
- Abstracts Group

Wells Group

First click on the *Query Map Features* icon to clear the data.

1. To search by Wells click circle left of *Wells*
2. Under *Select a Layer*, choose *PBSN Producers*
3. Under *Property Filter: Searching Parameter*, choose a criteria such as API number, lease name, operator, etc. Type your search *Parameter Value* keeping it as short as possible but still descriptive.
4. In most cases leave *Operation to be performed as Contains*.
5. Under *Parameter Value* type in the API number, lease name, etc
6. Go to *Execute* and click.
7. Wait a few seconds for results to appear in the *Results* box.
8. Click on the result you want to highlight.
9. Click on *Zoom* and map will zoom to area chosen a few seconds
10. Click on *Select* and wait a few seconds for area to be highlighted. Well information results will also show in box to lower left of map when located. It may be highlighted and copied to your clipboard on your computer for pasting elsewhere.
11. When finished, right click and choose *Clear Selection*
12. To perform another search, click on the Query icon on task bar and map will be cleared for new search.

Abstracts Group

1. To search by Abstracts click circle left of *Abstracts*
2. Under *Select a Layer*, choose a County
3. Under *Property Filter: Searching Parameter*, choose a criteria such as Abstract number or Survey name.
4. In most cases leave *Operation to be performed as Contains*.
5. Under *Parameter Value* type in the Abstract number or Survey name for the county selected
6. Go to *Execute* and click.
7. Wait a few seconds for results to appear in the *Results* box.
8. Click on the result you want to highlight.
9. Click on *Zoom* and map will zoom to area chosen in a few seconds.
10. Click on *Select* and wait a few seconds for area to be highlighted.
11. When finished, right click and choose *Clear Selection*
12. To perform another search, click on the *Query* icon on task bar and map will be cleared for new search.

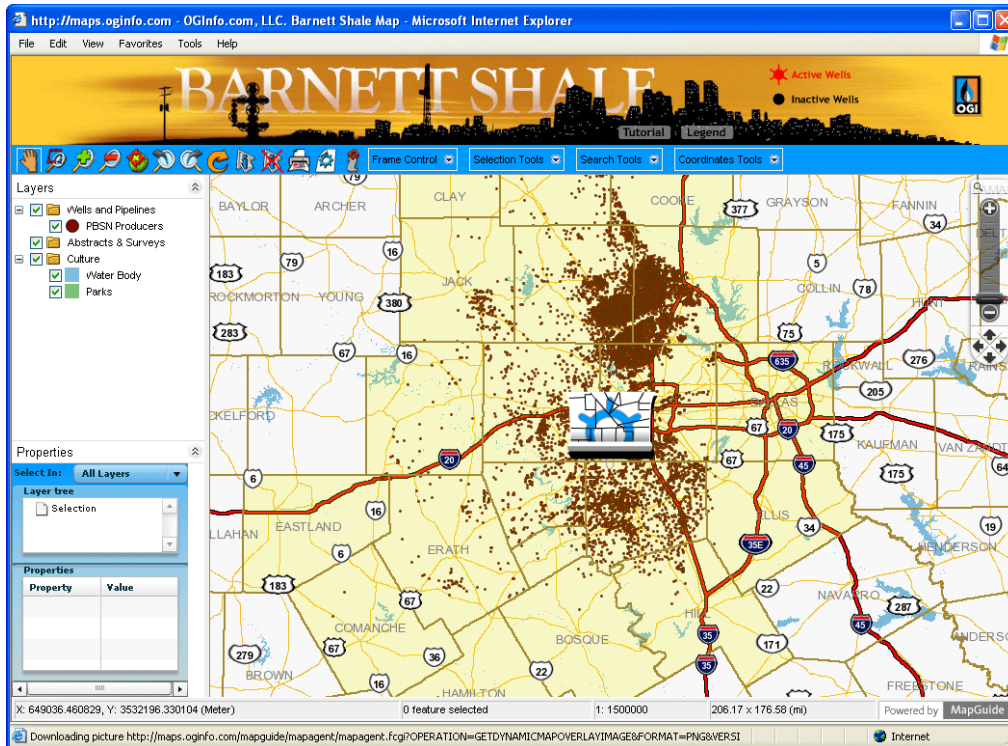
If you need further assistance, contact Raymond Horner at 361-904-0071, ext. 211 or e-mail at raymond@oginfo.com .



About OGInfo.com, LLC
Applied GIS.
Systems Development.
Data Sales & Management

OGI specializes in custom GIS solutions developed to meet the needs of today's oil and gas exploration and production companies. Focusing on client specific development, we are able to design and implement systems that allow up to date information sharing from any computer connected to the internet, giving decision makers on-demand access to the information they need. [OGI PowerMap](#) integrates our own data including survey, surface ownership, township and range, wells, pipelines, elevation, and flood plain to name a few, and your proprietary data, (leases, prospects, etc.) so you have all the information you need on one online map. There is no need to purchase and install costly GIS software. The Barnett Shale Map is an example of a customized

map, where we display the OGI base map and integrated production data from PBSN research. For basic instruction on using the Barnett Shale Map, please visit <http://oginfo.com/help.php> for an online instruction guide.



HERE

ARE SOME

QUICK TIPS ON POWERMAP TOOLS



Zoom to Rectangle - use this tool to zoom in on a specific area. Zoom in by clicking close to where you want to go, drag diagonally to create a rectangle over area of interest



Query Map Features – Click on this icon to open the right task pane to perform a map query



Select Mode – This tool will allow you to select features and display attributes



Clear Selection - Click on this tool to turn off current selection



Pan Tool - use this tool to pan map in any direction.



Zoom In - use this tool to zoom in to a desired location by clicking on top of an area of interest.



Zoom Out - Use this tool to zoom out from a desired location by clicking on top of an area of interest.



Initial Map View - Click this tool to zoom out to original view. In this view you should be able to see Texas, Louisiana and Gulf of Mexico offshore grid.



Refresh View - Click on this tool to reload page.

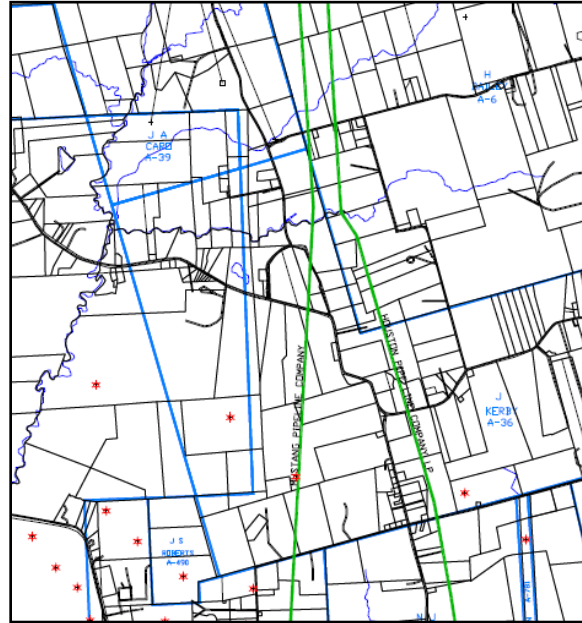


Get Printable Page - Use this tool to create a screen shot of map view within a new browser window in a printable composited format.

OGI's Custom GIS Solutions
Exploration and Production Companies

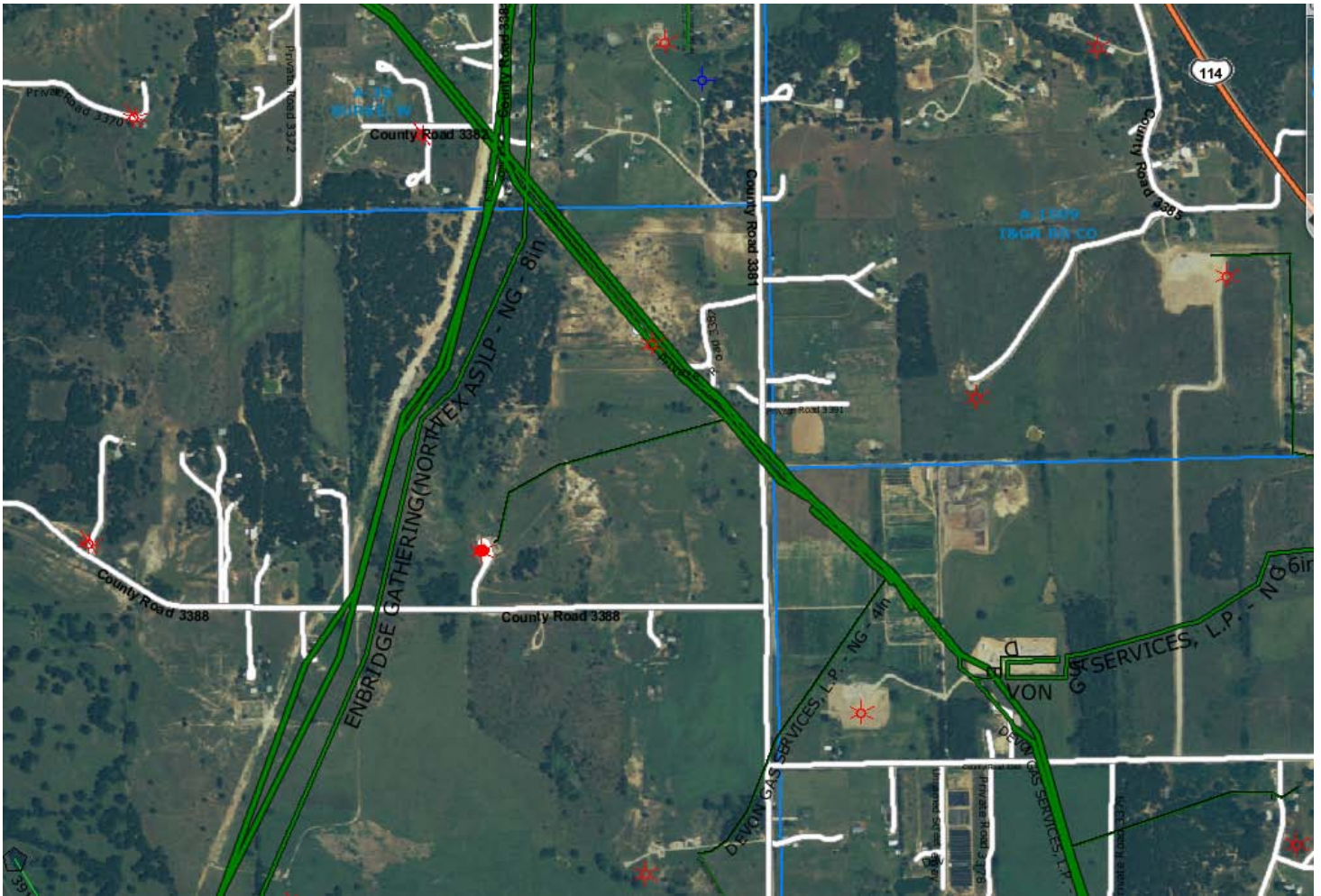
Along with industry leading web-based GIS Solutions, OGI offers bulk GIS outsourcing. We can plat competitive leases, in house leases and provide custom mapping services. Mapping requests can generally be completed in a few days. Platting tedious metes and bounds using aerial georectification to ensure accuracy is one of the many skills at which the GIS mapping team excels. OGI's involvement is always custom tailored to meet the specific needs of the client. If you have your own GIS department, OGI can make itself available to assist when and where needed. At a moment's notice, you can expand your department's output to handle any urgent demands.

OGI provides true GIS data that can be loaded into any GIS software package or can be loaded on our own OGInfoMap to view, edit and add tracts and their associated attributes. All of our data is “pre processed” so there’s no guessing about coordinate systems or projections. All files delivered to the client are ready for use and they are all in a single coordinate system of your choice. OGI specializes in raster to vector (paper to digital) conversions and we can produce large scale maps on our 60" plotter and can scan documents up to 54". We also provide Oil and Gas Reporting Services for Texas, Louisiana and Offshore that include permit, completion and production data.



Pipeline Companies

OGI has developed pipeline industry specific tools including right of way report generation, proximity permit reporting and more. Pipeline companies can draw proposed pipeline routes over an optimized stack of reference layers such as parcels, wells, roads, legal boundaries, terrain, hydrology, etc. and then with ease generate spreadsheets and other reports containing property owner names, addresses, land values, distance to pass on to land, derive preliminary cost estimates and pinpoint potential problems long before breaking ground.



This screen shot from OGI PowerMap show survey lines, roads, wells and pipelines, all with a 2M resolution full color aerial behind the map layers.

Finding Results:

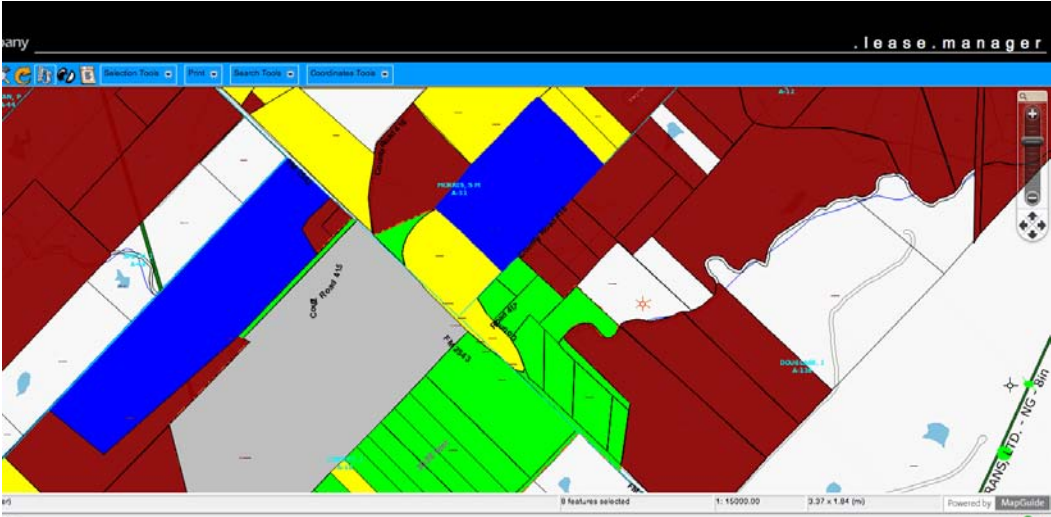
Index	Name	Address
Trct 1	SOLIMAN, KAMEL ETAL	2747 8TH AVE
Trct 2	HINKEL, GLEN R	3715 KENNEDALE NEW HOPE RD
Trct 3	HINKEL, GLEN R	PO BOX 540
Trct 4	HARRISON JET GUNS INC	8552 KATY FWY STE 130
Trct 5	THOMAS, LINDA K	-3715 KENNEDALE NEW HOPE RD

Index	Name	Address	City	State	Zip	Feet
1	SOLIMAN, KAMEL ETAL	2747 8TH AVE	FORT WORTH	TX	76110 - 3041	83.4
2	HINKEL, GLEN R	3715 KENNEDALE NEW HOPE RD	KENNEDALE	TX	76060 - 7233	138.65
3	HINKEL, GLEN R	PO BOX 540	KENNEDALE	TX	76060 - 0540	224.11
4	HARRISON JET GUNS INC	8552 KATY FWY STE 130	HOUSTON	TX	77024 - 1804	14.86
5	THOMAS, LINDA K	-3715 KENNEDALE NEW HOPE RD	KENNEDALE	TX	76060 - 7233	364.36

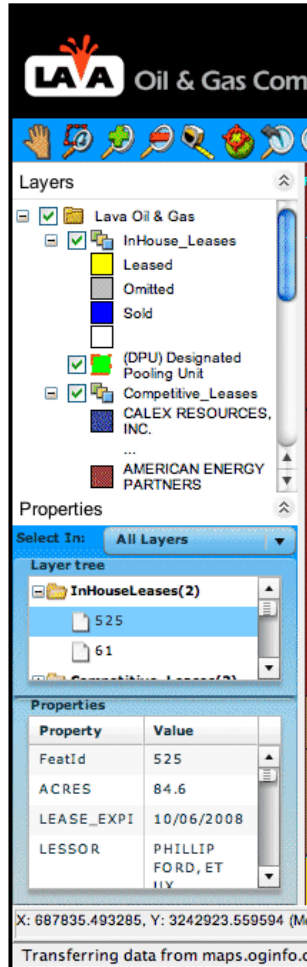
In this view a proposed pipeline (blue line) has been drawn on the map. The surface ownership report is generated on the right pane, and the information can be exported to Excel including Owner Name, address, City, State, Zip and distance that the line crosses through the tract.

Land Service Companies

OGI's Land management system, LAVA, provides up to the minute collaboration between field and in-house managers and cuts down on the lifecycle of critical decision making. LAVA provides easy lease, memo, LPR, draft, rider and exhibit creation along with acreage and draft totals. Managers can easily track prospect progress, gross/net acres acquired, gross/net acres committed or view the results of an ongoing lease check on a minute by minute basis. This web-based interface is linked to a customized online map, so the map stays up to date.



In this view, In house and competitive leases are displayed. This custom GIS system allows lease management that is tied directly to the online map.



For more information on how OGI can customize solutions for your company, call Raymond Horner at 361-904-0071 or visit us online at www.oginfo.com.