

Jack

Winn

Overton

Spivey

Parsons

Tarrant

1979-1980

THE BARNETT SHALE

PAST PRESENT AND FUTURE

Greath

Samuel

Johnson

1981

Blodgett

Winn

BARNETT SHALE DEVELOPMENT

- 1981 – Mitchell Energy Corporations C.W. Slay #1. A vertical test well in southeastern Wise County.
- 1981–1997 – Various completion techniques and types of fracture stimulations were applied, i.e. nitrogen fracs, foam fracs, linear gels and cross linked gels.

BARNETT SHALE 1991 - 1998

- 1991 – First horizontal well drilled in the core area T.P. Sims B #1.
- 1991 – Oryx Energy Corporations Grant Unit #1 drilled a horizontal well in Montague County.
- 1997 – First application of “LSF” (Light Sand Frac). This caused a steep change in the economics of the play.
- 1997 – Chevrons Mildred Atlas #1 drilled in Johnson County.
- 1998 – Expansion of the play began with Denton and Tarrant County.
- 1998 – First horizontal well drilled “outside” of the core was Mitchell Energy Corporations L.B. Wilson GU #1 near Boyd, Texas.

BARNETT SHALE 2002- PRESENT

- 2002 – First horizontal well in Parker County Mitchell Energy Corporations Veale Ranch #1.
- 2002 – First horizontal well in Johnson County Mitchell Energy Corporations Sandefur #1.
- 2003-Forward – Play has become largely based on horizontal drilling, especially outside the core area & Wise, Denton, and Tarrant.
- Present – There are over 150 drilling rigs working with production approximately at 3½ bcf/d. The Barnett Shale is the largest gas field in the state of Texas.



RANGE RESOURCES

FORT WORTH BASIN PROJECT

BARNETT SHALE TIME PROGRESSION



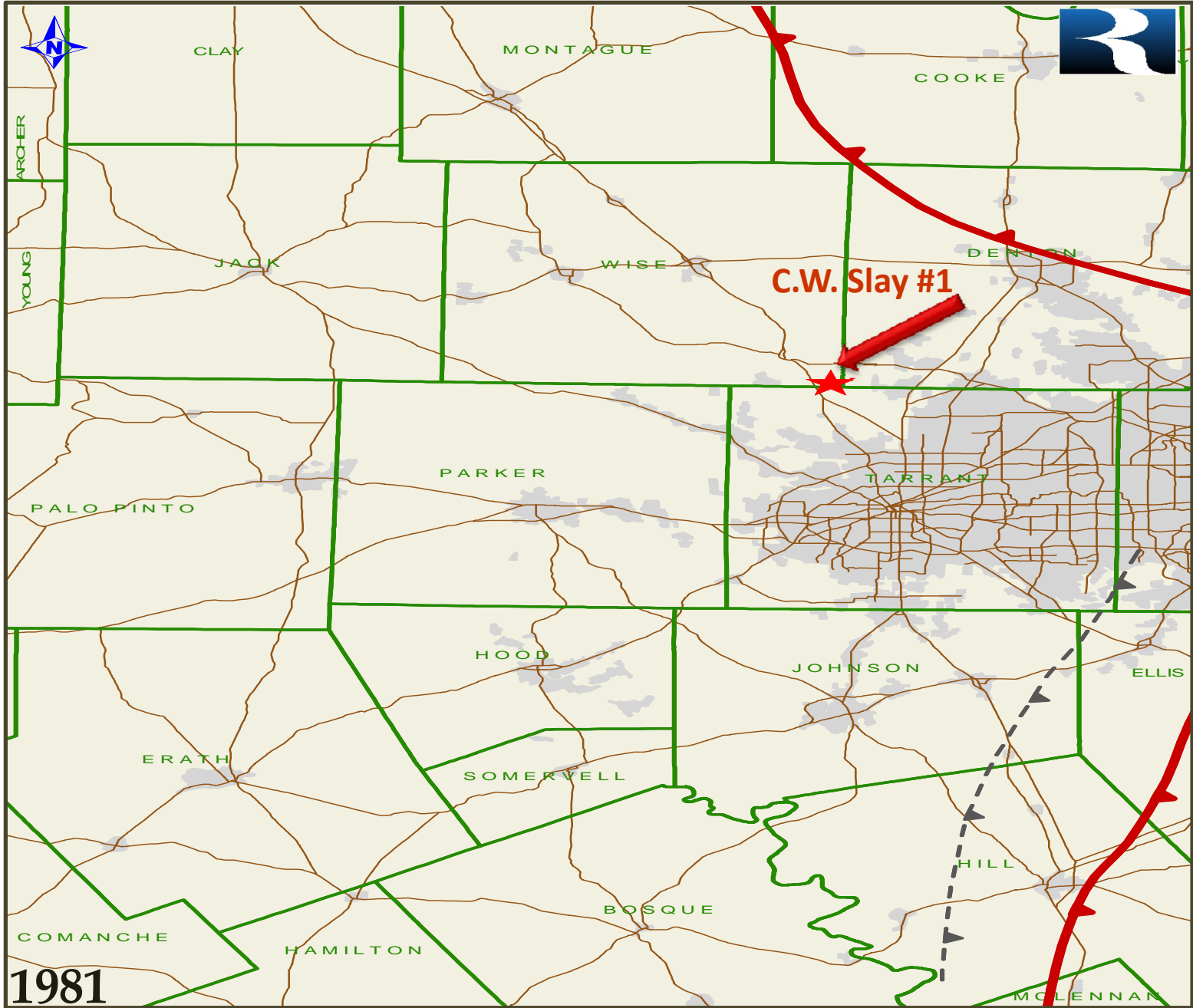
By: RT

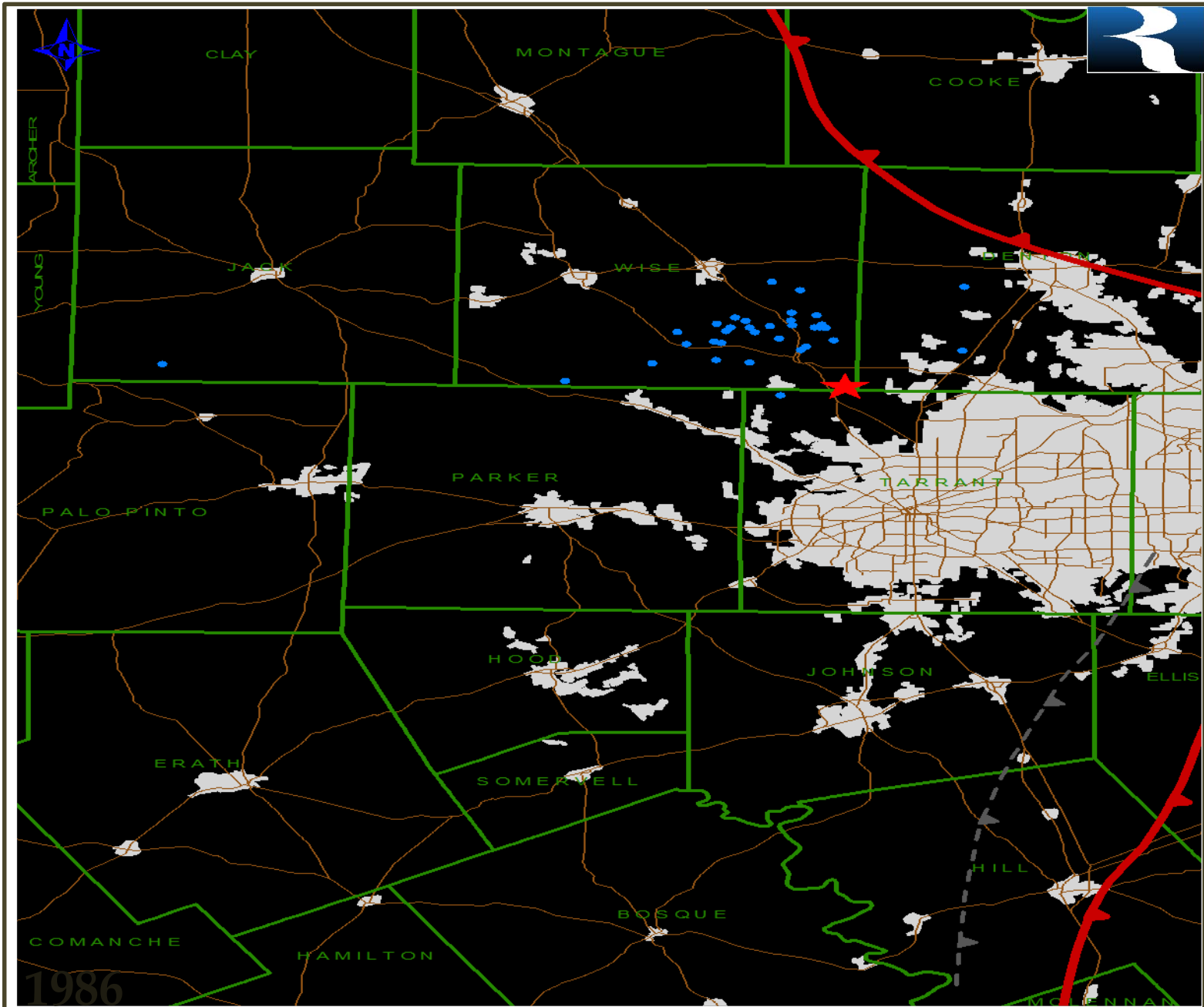
MAP PROJECTION

State Plane: Texas North Central (NAD27)
XY Units : FEET

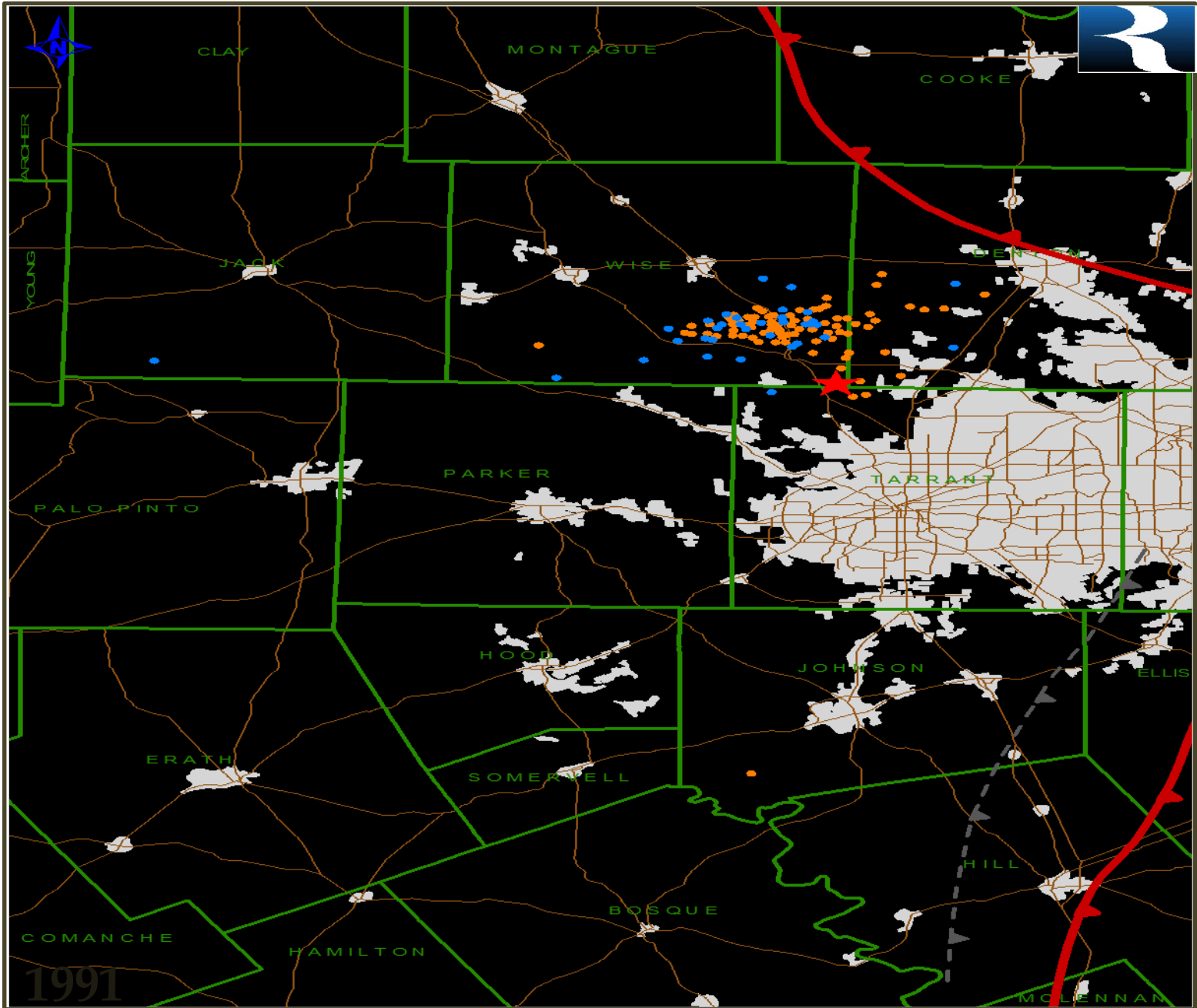


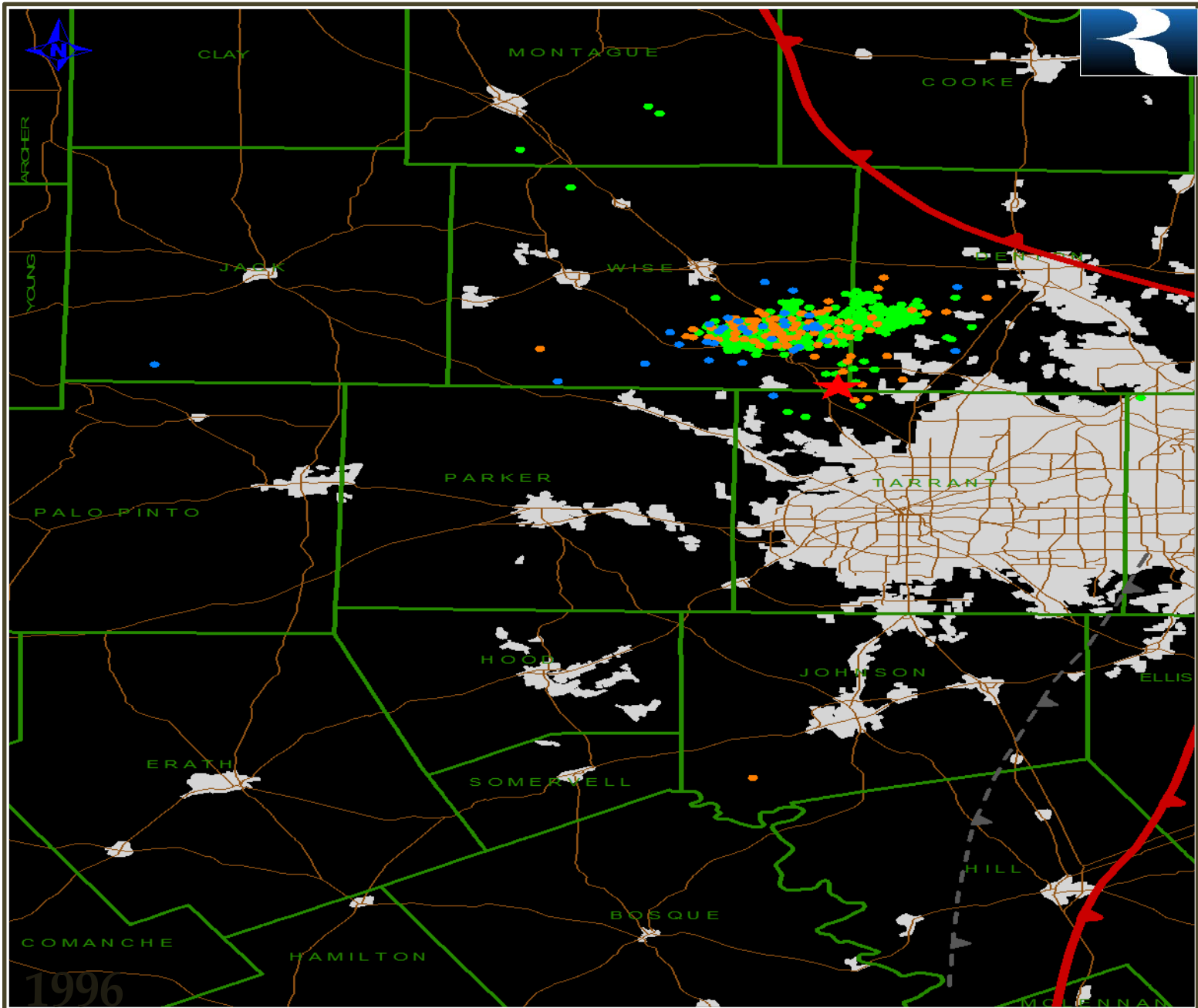
February 28, 2008 8:05 AM

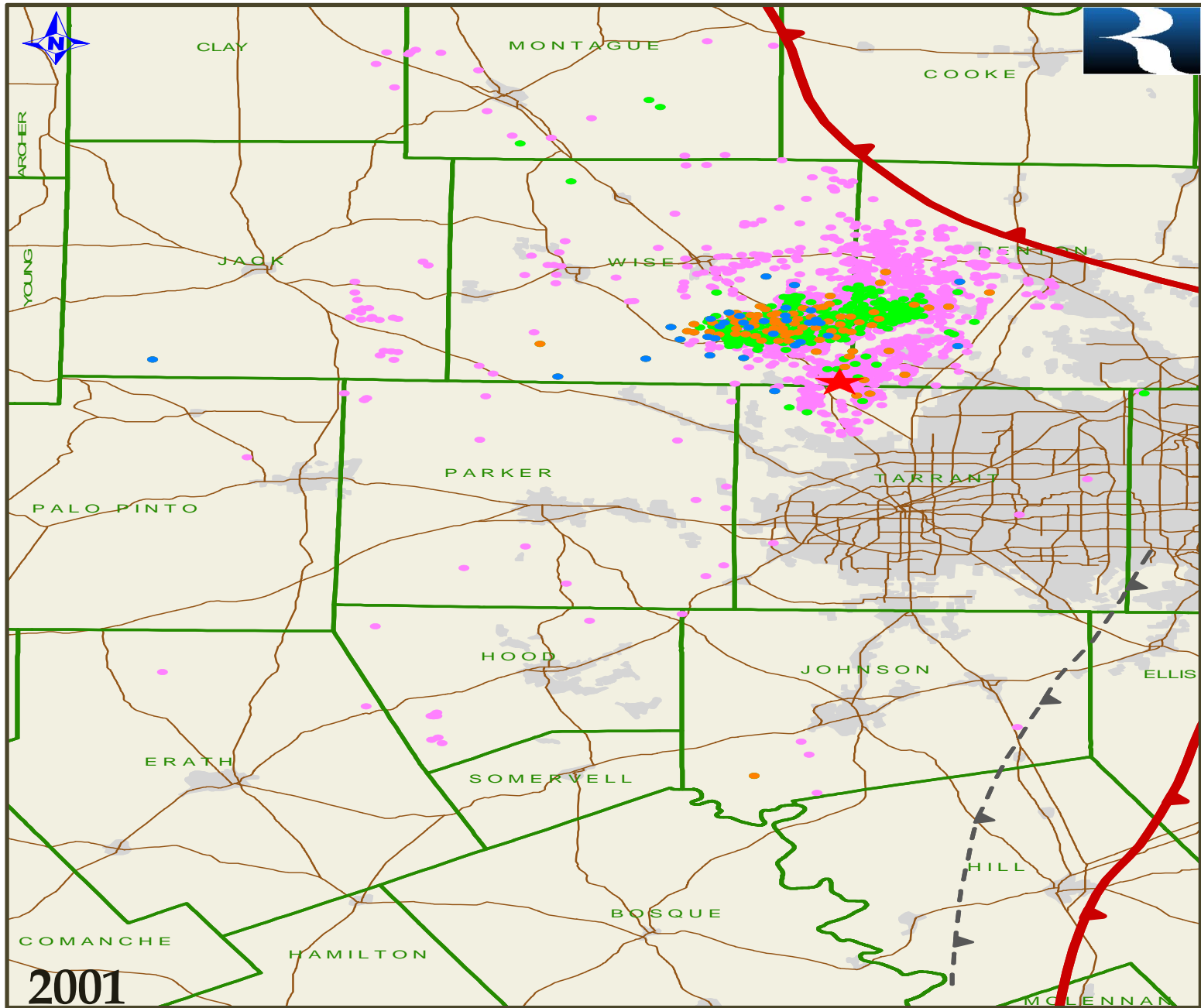


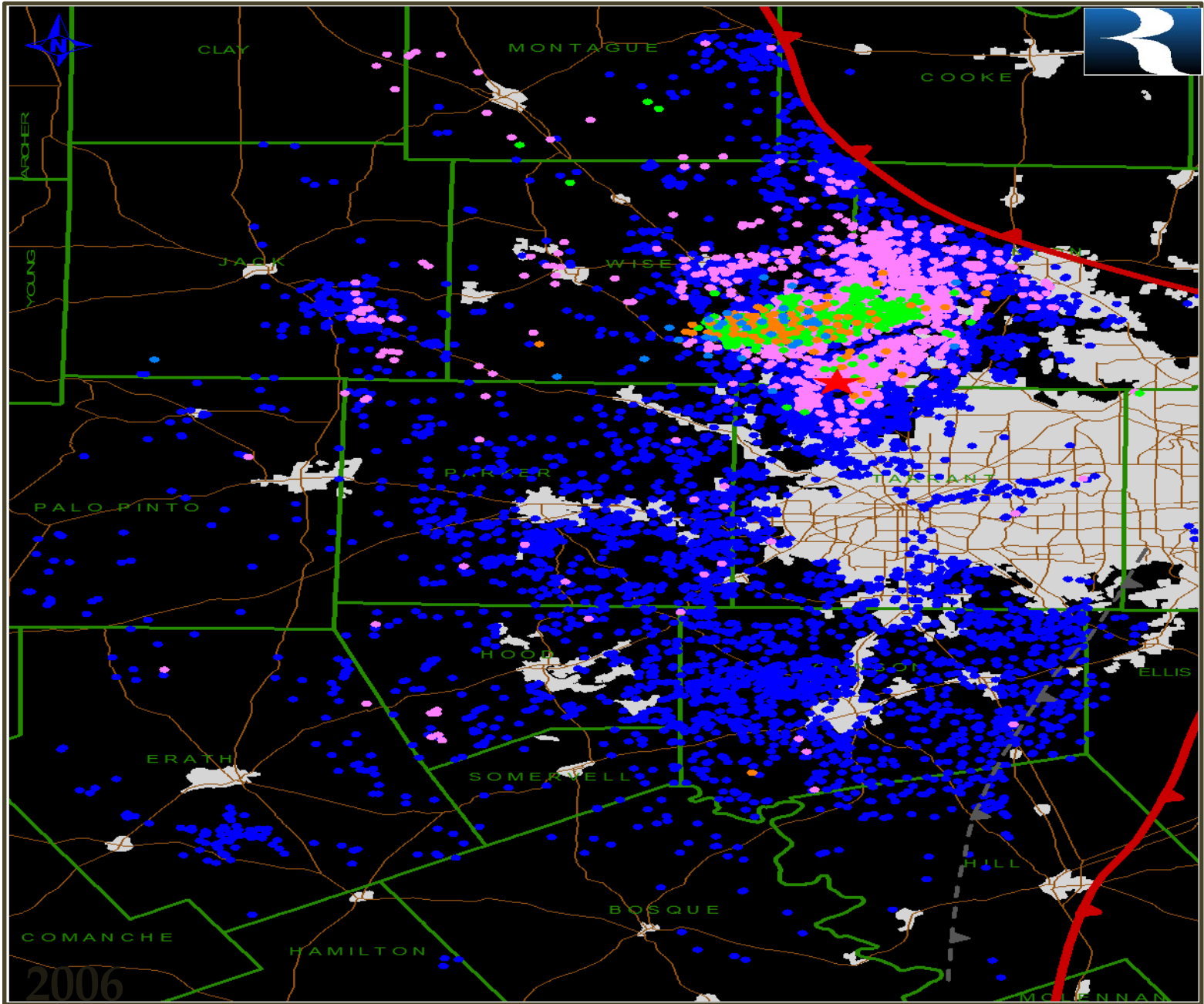


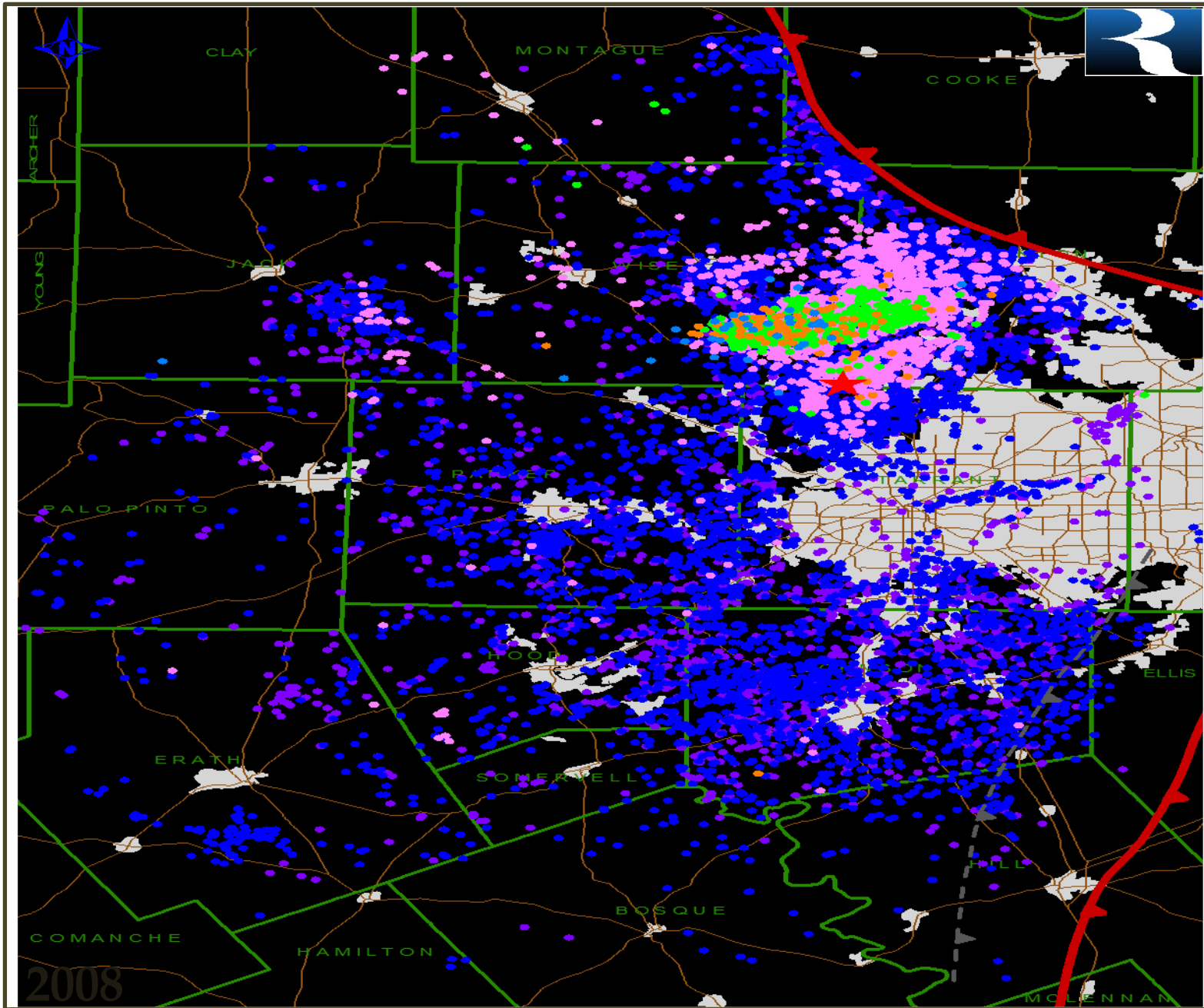
1986











2008

Barnett Shale Production vs. Takeaway Capacity



Analysis – December 2007

Barnett 9-county Forecast by Operator
Expected Case

